

Implementing the AIM Perinatal Mental Health Conditions Bundle in MA

Celebration & Sustainability

February 17, 2026



WELCOME!

- Please type your name and institution into the chat.
 - **Optional share:** Black History Month resources – books, movies, podcasts, articles?
- Please mute yourselves when not speaking.
- Feel free to type your questions into the chat during the webinar.
- We will record this session and upload the recording and webinar slides to our website afterwards!

Agenda

12:00–12:10 Welcome & PNQIN Announcements

12:10–12:25 Celebration of PMHC Bundle Achievements!

12:25–12:45 Review of Sustainability Framework

12:45–1:00 Discussion, Q&A



AGENDA

12:00–12:10

Welcome & PNQIN Announcements Kali Espinola, MPH

12:10–12:25

Celebration of Achievements! Kali Espinola, MPH

12:25–12:45

PMHC Sustainability Framework Kali Espinola, MPH

12:45–1:00

Discussion, Q&A

All



Reminders & Announcements



Kali Vitek Espinola, MPH
PNQIN Senior Project Manager

Agenda

12:00–12:10 Welcome &
PNQIN Announcements

12:10–12:25 Celebration
of PMHC Bundle
Achievements!

12:25–12:45 Review of
Sustainability
Framework

12:45–1:00 Discussion,
Q&A



Please complete February Feedback Survey!

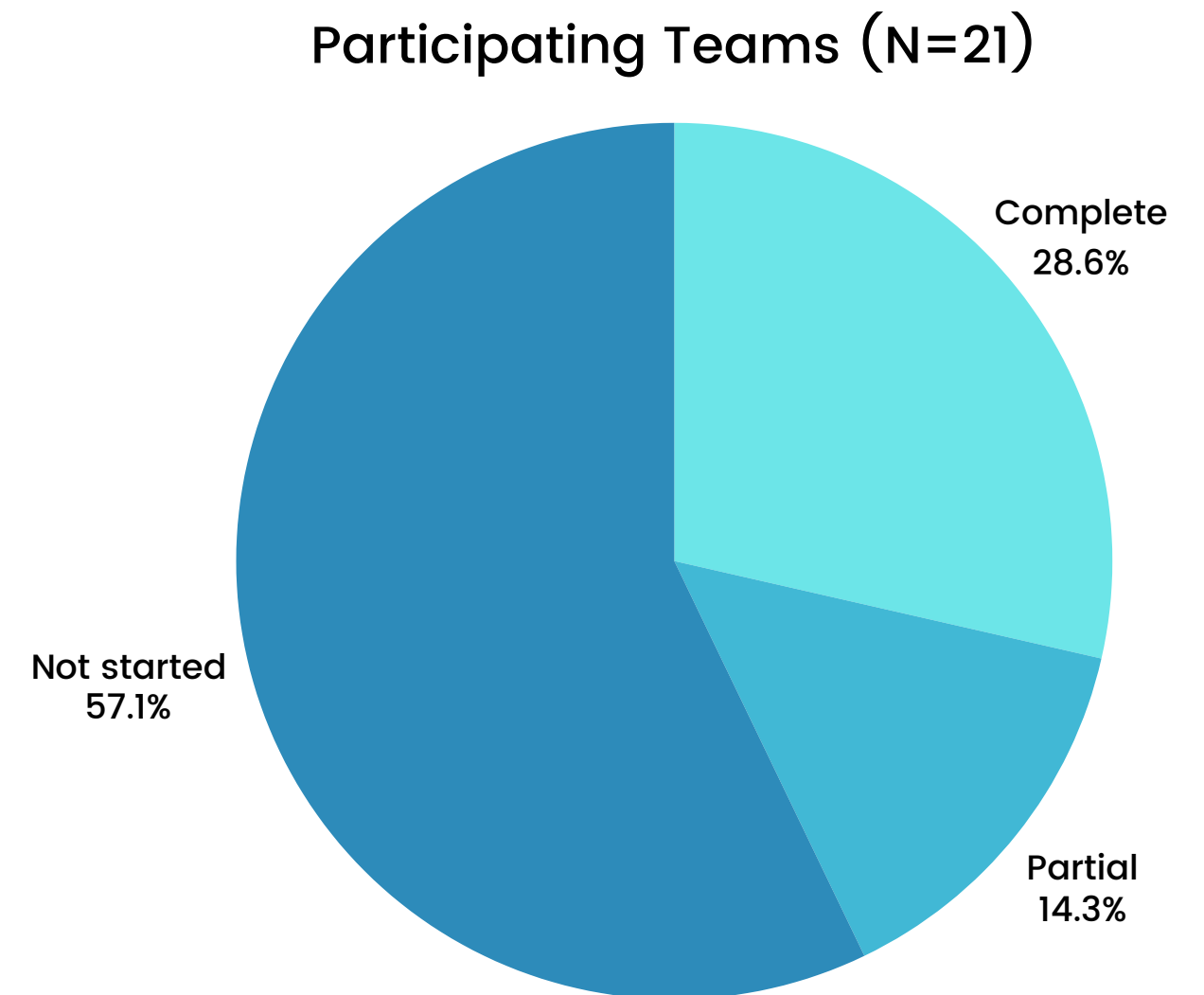
The February biannual implementation feedback survey is open until March 4th! Weekly reminders to come.

Five Sections taking 20-25 minutes:

1. Respondent Information
2. Data Submission
3. **Creating a Sustainability Plan***
4. Usefulness of Resources
5. Additional Questions

**Fulfills participation requirement for a draft plan!*

Thank you Berkshire, Cooley, Fairview, MetroWest, Mount Auburn, and UMass for being the first to complete!



PMHC Research Study - Call for Interviewees!

Brooke Fortin, our previous PMHC Bundle Project Coordinator, is conducting a research study with Dr. Tiffany Moore Simas about the PMHC Bundle implementation in Massachusetts!

Who are we looking for?

Hospital team members who want to share about their experience with implementation of the PMHC Bundle.

What will it entail?

One interview with standardized questions that should take approximately **40-60 minutes**. The interview **will be recorded** and will take place over zoom/phone call.

We aim to use the information we learn to **improve bundle implementation in the future** as well as **share our experience with other state perinatal quality collaboratives and hospital teams** planning to implement this bundle in the future!

Please reach out to Brooke Fortin if you are interested in sharing about your experience (bfortin@pnqinma.org)!

You will not be compensated. This study was reviewed by the UMass Institutional Review Board and was deemed exempt.



MA Announcements

PNQIN 2026 Spring Summit – Award Nominations!

We are excited to announce that PNQIN is seeking nominations for 5 awards, which will be presented at our upcoming summit on May 13th, 2026.

Awards are as follows:

- **Clinical Team Award:** *This award will be given to 1 tertiary care center and 1 community hospital, health center, or ambulatory clinic.*
- **Diop Award**
- **Innovation Award**
- **Patient & Family Advocacy Award**



To **review guidelines for eligibility and criteria for each award category and to see our past award winners**, visit our new [PNQIN Summit Awardees Page](#). *Guidelines and criteria will also be distributed after the webinar.*

All nominations and accompanying materials should be sent in one email to Kali Vitek Espinola at PNQINAdmin@pnqinma.org by **March 17th, 2026**. Nominations will be reviewed afterwards by the PNQIN Awards Committee.

DPH Doula Training Scholarship (deadline February 20th, 2026)

The DPH Doula Training Scholarship is now open on the [DPH Doula Initiative](#) website until February 20, 2026.

We are funding individuals interested in becoming a doula AND current doulas that are interested in pursuing additional training, particularly around supporting immigrant families and families recovering from substance use.

You are invited to circulate this scholarship information among your colleagues, doula networks, or anyone you know who may benefit from the scholarship.

Please contact Sonia Chang, MA Community Birth and Doula Initiative (schang@edc.org) with any questions!



March of Dimes Advocacy Day 2026 (March 4, 2026)



Registration Link: <https://marchofdimes.quorum.us/event/30874/>

Join us to be a voice for moms and babies during March for Change. You will receive information on priorities, meet with your state lawmakers and share meeting feedback with our staff. March for Change advocate volunteers will also be paired with experienced advocates to offer a greater level of confidence during meetings.



MGB 62nd Annual Update in Obstetrics and Gynecology (March 6-11, 2026)

Registration is now open for this continuing education course held **virtually and in-person** in Boston, MA!

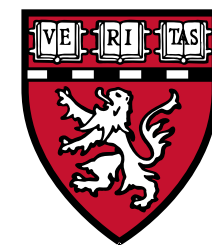
This course, directed by Nawal Nour, MD, MPH, MBA, chair of Obstetrics and Gynecology at Mass General Brigham, and led by Brigham and Women's Hospital faculty, provides comprehensive reviews of the most important advances in obstetrics and gynecology, as well as guidance to incorporate them into general practice.

Education is practical and results focused, designed to help providers of women's health optimize the management of clinical situations that occur throughout the female lifecycle. Participants will have ample time with faculty for discussion and questions.

Visit the [course page](#) to view the course schedule, learning objectives, faculty list, and more.



Mass General Brigham



HARVARD
MEDICAL SCHOOL



When Survivors Give Birth: Trauma-informed Foundational and Advanced Clinical Skills Trainings (March 26-27)

In March 2026, [When Survivors Give Birth](#) will offer its newly updated, trauma-informed Foundational and Advanced Clinical Skills Trainings at **Newton-Wellesley Hospital in Newton, MA.**

This training supports therapists, medical providers, doulas, nurses, social workers, public health professionals, and other allied providers in working effectively with sexual trauma survivors before, during, and after birth. **With 1 in 4 perinatal clients/patients having a history of sexual trauma, this content is essential for anyone providing perinatal care.**

Participants may attend one or both days and will leave with practical tools, increased confidence, and greater ease in their work. CEs are currently available for midwives, nurses, and doulas through ACNM and are anticipated for mental health professionals.

[Click here for registration and more information!](#)

Please reach out to Elizabeth Paruchuru with any questions.
(hello@whensurvivorgivebirth.com).



MCPAP for Moms: Training Opportunity

MCPAP for Moms, the Massachusetts State Perinatal Psychiatry Access Program, is available as a resource to providers providing **prenatal, perinatal, birthing, and postpartum care** to individuals in Massachusetts.

MCPAP for Moms helps to build health care providers' capacity to address perinatal mental health and substance use disorders through: **trainings and toolkits, telephone-access to perinatal psychiatric consultation, and facilitation of referral to community resources.**

You can learn more about their services on their [website](#).

As part of their training offerings, **MCPAP for Moms is available to come to your institution for Grand Rounds and/or trainings with affiliated obstetric practices!**

If you are interested in learning more or would like to schedule a time for Grand Rounds, please contact Beth McGinn at: Elizabeth.McGinn@carelon.com or email Kali (PNQINAdmin@pnqinma.org).



National Announcements



28 DAY ANTI-RACISM CHALLENGE, v3

Two-thirds of pregnancy-related deaths are preventable, and Black women are three times more likely to die from a pregnancy-related cause than white women.

How will you do your part?

Join us for daily opportunities to reflect, learn, and act.

Starting February 1st, 2026: “The Institute for Perinatal Quality Improvement's (PQI) 28 Day Anti-Racism Challenge (4 weeks long) was designed to help us all more effectively SPEAK UP Against Racism. We have created a list of daily activities that are designed to enhance your insights and provide you tools to support your anti-racism efforts. Each day during the challenge there is a quote meant for reflection (Reflect), a learning activity (Learn), and a recommended action (Act).”

Learn more and register now for this free educational opportunity at

<https://www.perinatalqi.org/page/Anti-RacismChallengev3>



Family-Centered Care Taskforce Webinar (March 12, 2026)

FCC TASKFORCE WEBINAR

March 12, 2026 | 11:00AM - 12:30PM PT

Measuring FCC Practices Across 99 NICUs: Are Resources and Acuity Correlated with Family Empowerment?



Mia Malcolm, BS, CDFT (she/her)

- Community Engagement Specialist, Ollie Hinkle Heart Foundation
- Co-Chair, FCC Taskforce EDIBJ Committee
- Senior Research Coordinator, Washington University School of Medicine & Stanford School of Medicine
- NICU Parent of Gavin



Malathi Balasundaram, MD (she/her)

- Clinical Professor, Stanford School of Medicine
- Founder & Executive Director, Family-Centered Care Taskforce
- Neonatal Intensivist, El Camino Health NICU

Trust and Engagement in the AI Era: Advancing Family-Centered Care Through Responsible Innovation



James S. Barry, MD, MBA (he/him)

- Professor of Pediatrics, Section of Neonatology
- Medical Director, University of Colorado Hospital NICU
- President, NeOMINDAI

[JOIN FOR FREE TO REGISTER](#)



[FCC TASKFORCE WORK](#)



GENEROUSLY SUPPORTED BY:



FAMILY-CENTERED CARE TASKFORCE

Celebration of Achievements!



Kali Vitek Espinola, MPH
PNQIN Senior Project Manager

Agenda

12:00–12:10 Welcome &
PNQIN Announcements

12:10–12:25 Celebration
of PMHC Bundle
Achievements!

12:25–12:45 Review of
Sustainability
Framework

12:45–1:00 Discussion,
Q&A





PNQIN PMHC BUNDLE WORKGROUP



Tiffany Moore Simas, MD
UMass Memorial Health



Kali Vitek, MPH
PNQIN



Brooke Fortin
PNQIN



Bonnell Glass, MN
PNQIN/UMass



Candice Belanoff, ScD
BUSPH



Christin Price, MD
PNQIN



Elysia Larson, ScD
HMS/BIDMC



Hannah Bonoyer
Sturdy/PMHC Survivor



Jessie Colbert
Mass PPD Fund



Julia Prentice, PhD
BLC



Karen Manganaro, DNP
PNQIN/BWH



Kriti Lodha
PSI-MA/PPP Survivor



Maithri Ameresekere,
MD, BMC



Mimi Pomerleau
PNQIN/BWH



Ron Iverson, MD
PNQIN/MGH



Sarah Krinsky
MassHealth



Stephanie Crawford
Propa City
Community Outreach



Swathi Damodaran
MassHealth



Uruj Haider, MD
MCPAP for Moms

PMHC BUNDLE: PARTICIPATING HOSPITALS

1. Anna Jaques Hospital
2. Berkshire Medical Center
3. Beth Israel Deaconess Medical Center
4. Beverly Hospital
5. Boston Medical Center
6. Cooley Dickinson Hospital
7. Fairview Hospital
8. Holy Family Hospital
9. Lawrence General Hospital
10. Lowell General Hospital
11. Massachusetts General Hospital
12. MetroWest Medical Center
13. Mount Auburn Hospital
14. Newton-Wellesley Hospital
15. Salem Hospital
16. Southcoast Charlton Memorial Hospital



17. Southcoast St. Luke's Hospital
18. St. Elizabeth's Medical Center
19. Tufts Medical Center

20. UMass Memorial Medical Center
21. Winchester Hospital



Participation Achievements: Webinar Attendance



188

Unique webinar attendees between
Sep 2024 and Jan 2026!

Individuals who attended 50% or more of the time:

Megan Carney – BLC
Katie Clarke – BIDMC
Nairi Kalpakian – BLC
Amy Walker – Cooley
Christa Carrig – MGH/BIDMC
Courtney Petrowski – Southcoast
Alexandra Spadola – Tufts
Christin Price – PNQIN
Ellen Morrill – Anna Jaques
Grace Nowakoski – Cooley
Michelle Regan – Anna Jaques

Brigid Gosselin – Holy Family
Elysia Larson – BIDMC
Marissa Troy – Newton-Wellesley
Sarah Thibodeau – Lowell/Mt. Auburn
Linda Potts – Beverly
Beth Buxton – DPH
CJ Pizzano – Winchester
Elizabeth Scheurer – Cooley
Lauren Sousa – Southcoast
Sandra Vosburgh – Fairview

Participation Achievements: Webinar Attendance

Teams attending 50% or more of the time (N=15 of 21):

Beth Israel Lahey Health 
Anna Jaques Hospital

Beth Israel Lahey Health 
Beth Israel Deaconess Medical Center

Beth Israel Lahey Health 
Beverly Hospital



 **Mass General Brigham**
Cooley Dickinson Hospital

 Fairview Hospital
BERKSHIRE HEALTH SYSTEMS

MerrimackHealth

TuftsMedicine
Lowell General Hospital

Beth Israel Lahey Health 
Mount Auburn Hospital

 **Mass General Brigham**
Newton-Wellesley Hospital

 **Southcoast[®] Health**

TuftsMedicine
Tufts Medical Center

 **UMass Memorial Health**
UMASS MEMORIAL MEDICAL CENTER

Beth Israel Lahey Health 
Winchester Hospital



Participation Achievements: Webinar Attendance

Teams attending 50% or more of the time (N=15 of 21):

Beth Israel Lahey Health 
Anna Jaques Hospital

Beth Israel Lahey Health 
Beth Israel Deaconess Medical Center

Beth Israel Lahey Health 
Beverly Hospital



 **Mass General Brigham**
Cooley Dickinson Hospital



MerrimackHealth

TuftsMedicine
Lowell General Hospital

Beth Israel Lahey Health 
Mount Auburn Hospital

 **Mass General Brigham**
Newton-Wellesley Hospital

 **Southcoast® Health**

TuftsMedicine
Tufts Medical Center

 **UMass Memorial Health**
UMASS MEMORIAL MEDICAL CENTER

Beth Israel Lahey Health 
Winchester Hospital

If your hospital is not shown here, you may be close to reaching 50%!
Anyone from your team can watch past recordings to receive credit!



Participation Achievements: Data Submission

168

Completed data submissions
between Sep 2024 and Jan 2026!

24

Data submissions started but not
(yet) completed!

Teams submitting 50% or more of the time (N=8 of 21):

Beth Israel Lahey Health 
Anna Jaques Hospital

Beth Israel Lahey Health 
Beth Israel Deaconess Medical Center

 **Mass General Brigham**
Cooley Dickinson Hospital

TuftsMedicine
Lowell General Hospital

Beth Israel Lahey Health 
Mount Auburn Hospital

 **Fairview Hospital**
BERKSHIRE HEALTH SYSTEMS

 **Southcoast[®] Health**



Participation Achievements: Data Submission

Teams submitting 50% or more of the time (N=8 of 21):

Beth Israel Lahey Health 
Anna Jaques Hospital

Beth Israel Lahey Health 
Beth Israel Deaconess Medical Center

 **Mass General Brigham**
Cooley Dickinson Hospital

TuftsMedicine
Lowell General Hospital

Beth Israel Lahey Health 
Mount Auburn Hospital

 **Fairview Hospital**
BERKSHIRE HEALTH SYSTEMS

 **Southcoast[®] Health**

If your hospital is not shown here, you may be close to reaching 50%! You can finish partial submissions and/or retroactively submit missing months to receive participation credit!



Participation Achievements: Feedback & Sharing Opportunities

Fall 2024 Summit Posters

43

And counting feedback surveys completed between Sep 2024 and Feb 2026!

10

Webinar presentations from participating hospital teams!

6

Hospital teams contributed to webinar content and/or shared resources with the collaborative (coming soon to the website)!

- Beverly: “Reclaim Your PINKNESS”
- BMC–Main: “Behavioral Health Screening Implementation in a Perinatal Refugee Women’s Health Clinic”
- MGH: “Listening to the Patient: Birth Stories Predict Postpartum Mental Health”
- MAH: “Mount Auburn Hospital: Perinatal Mental Health Working Group”
- Lowell: “Perinatal Mental Health Conditions”



Let's Celebrate: Hospital Goals & Successes



Beth Israel Lahey Health 
Anna Jaques Hospital

To improve patient education we will have translated our educational materials into our top two most common foreign languages by 12/1/25.

Beth Israel Lahey Health 
Beth Israel Deaconess Medical Center

We already had some PMHC work in place, and have provided a lot of education to the clinical staff.

 Berkshire Health Systems

We made the Perinatal Depression Screening Mandatory and have a 100% completion rate. We are working towards making the education mandatory.

Beth Israel Lahey Health 
Beverly Hospital

To provide screening and referrals to 90 % of all patients using EPDS 10 question tool antepartum, inpatient post del and Postpartum follow up appointment, with 80% of documented risk referred to appropriate resources (MDC, Family Well, or Own MHCP).

Let's Celebrate: Hospital Goals & Successes



Collaboration with our Integrated Behavioral Health team.



By December 31, 2025, 80% of CBC staff and providers will have completed education on PMADS and response, we will have implemented a policy for response to PMADS including a standardized plan, we will create patient handouts and posters to increase patient awareness, and we will standardize screening by adding a screening tool at the first OB visit and aligning screening tools to be culturally and linguistically appropriate.



We will review scores of screenings with 100 % of patients both English speaking and non english speaking.

Let's Celebrate: Hospital Goals & Successes



MerrimackHealth

Methuen Hospital: Over 50% of monthly webinars attended.

MerrimackHealth

Lawrence Hospital: To provide all patients with appropriate postpartum follow up information.

TuftsMedicine
Lowell General Hospital

By February 2026, 50% of eligible OB providers will have completed education on PMHC's including screening, assessment and the importance of management during the perinatal period.

 **Massachusetts General Hospital**
Founding Member, Mass General Brigham

Mostly keeping up with data collection that is accessible.

Let's Celebrate: Hospital Goals & Successes



To assure 100% of postpartum persons will be screened using the EPDS tool and education of staff for utilization and purpose of this tool will be 80% by Jan of 2026.



By December 31, 2025 50% of all pregnant/postpartum patients seen in MAPS offices for Initial OB, 28wk and 6 wk postpartum visits will have documented EPDS screening.



Small team passionate about improvement.



Submitting data as often as possible and completed all biannual feedback surveys so far.

Let's Celebrate: Hospital Goals & Successes



The increase in awareness for the clinics and inpatient.



Data collection and collaboration with system to obtain this data.



Dovetail with efforts for improving equity for mental health screening and treatment in our ambulatory care settings.

Let's Celebrate: Hospital Project Goals



We had significant existing implementation and even sustainability of ambulatory components of the PMHC bundle – in fact, when we queried the data, we found that 100% percent of our faculty/resident practice patients were screened in the ambulatory environment in the perinatal period.



We are meeting regularly and finding areas where we need to improve. We learned where our weaknesses were and were able to correct them.

Participation Achievements: Sustainability

Most teams plan to review PMHC bundle data **quarterly** for sustainability.

If data falls below goal, **teams suggest several action items** including:

- Increase staff education, PMHC simulation scenarios
- Survey staff to determine barriers/root cause analysis
- Delegate roles to invested staff
- Dive deeper into the data to identify gaps and patterns

Most teams plan to re-educate staff (including new hires) on PMHC **annually** using MCPAP for Moms and PNQIN resources, ACOG eModules, and MA-PSI trainings and certification.

Some ways that teams have managed **increased workloads** as a result of this bundle include restructuring the staff's daily schedule to include patient education and setting up electronic automation of tasks.

Supports that teams will/have put in place to reinforce implementation changes include: Meeting minutes kept in an easy-to-find place, Clinical Manager follow-up, postpartum care plans, utilizing unit Champions, and continuing to meet as a team to identify areas for improvement!



Sustainability Achievements: Key Measures

1. PMHC Assessment and Response Protocol
 - a. **Teams with protocol in place = 4**
2. Inpatient PMHC Screening, disaggregated by race/ethnicity, payor type, and language
 - a. **Teams with average 70% or higher across demographics = 8**
3. Patient Education on PMHC, disaggregated by race/ethnicity, payor type, and language
 - a. **Teams with average 70% or higher across demographics = 6**

Teams reaching Sustainability Criteria for all three measures will receive recognition with a certificate and are eligible to reduce data submission to quarterly (vs. monthly)!

Proposed Sustainability Framework for the PMHC Bundle



Kali Vitek Espinola, MPH
PNQIN Senior Project Manager

Agenda

12:00–12:10 Welcome &
PNQIN Announcements

12:10–12:25 Celebration
of PMHC Bundle
Achievements!

12:25–12:45 Review of
Sustainability
Framework

12:45–1:00 Discussion,
Q&A



TL;DR: Piloting a Sustainability Framework

1. **February 2026:** All teams encourage to submit data, attend webinar on 2/17, and complete implementation feedback survey to stay up-to-date with participation requirements.

2. **By the end of February, Kali will send each site a brief report of where they stand on participation requirements and sustainability criteria for 3 key measures:**

- PMHC Assessment and Response Protocol
- Inpatient PMHC Screening
- Patient PMHC Education

Chosen by PMHC Workgroup based on data submission volume, feasibility, and team interest.

3. **Between March and August 2026:**

- Data Submission:
 - Teams meeting sustainability criteria → Can start submitting quarterly and work on sustainability goals
 - Teams not yet meeting criteria → Continue to submit monthly and work towards completion of active project(s)
- Other Activities:
 - All teams to attend remaining webinars (N=2) and submit brief monthly status updates via Microsoft Forms
 - All teams to complete the August feedback survey and share their PMHC learnings at least once with other sites

4. **After August 2026:**

- Each site will be reviewed for recognition; certificates will be given once for Participation in this PMHC Bundle Collaborative and on a rolling basis for Sustainability Achievement as criteria are met.
- Using team status updates and coaching calls, PNQIN will help teams that have not yet reached sustainability to identify and work through QI challenges and support completion of PMHC bundle project(s).



Participation Requirements: Active and Sustainability Phases

Participation Checklist (Active Implementation)

To be considered fully participating in this bundle between Sept '24 and Feb '26, we ask that you complete:

1. Onboarding steps
 - a. Team Roster, Pre-Implementation Survey, data sharing agreement
2. Monthly data submission (Goal: 50% or more)
3. Monthly webinar attendance (Goal: 50% or more)
4. Implementation feedback survey @ 6, 12 and 18 months)
5. Draft or final sustainability plan
6. Sharing opportunities (e.g., contribute to a webinar, poster presentation at May '26 summit)



All participation requirements must be complete for your site to be reviewed for Sustainability Achievement and Recognition!



Participation Checklist (Sustainability)

To be considered fully participating in the sustainability of this bundle, we ask that you complete:

1. Data submission

- a. Monthly until sustainability criteria for all key measures are met (Goal: 50% of the time)
- b. Quarterly for at least 6 months after sustainability criteria for key measures are met

2. Webinar attendance & participation

- a. Monthly bundle status updates (Goal: 50% of the time)
- b. Quarterly live webinars in May and Aug 2026 (Goal: 50% of the time)

3. Implementation feedback survey in Aug '26

4. Sharing opportunities (e.g., contribute to a webinar, poster presentation at May '26 summit)



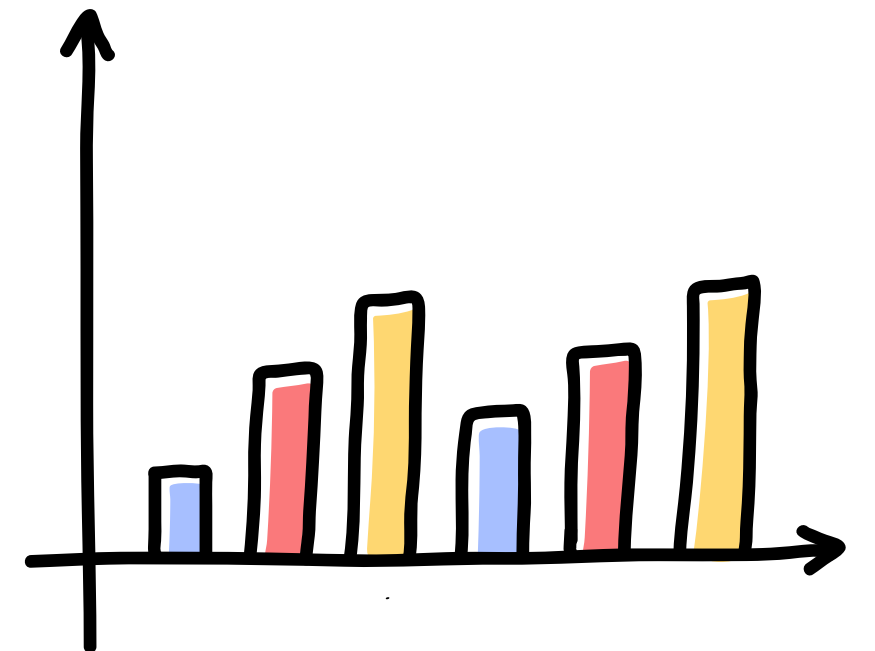
Sustainability: Data Submission

Data Submission: Shift in Focus to 3 Key Measures

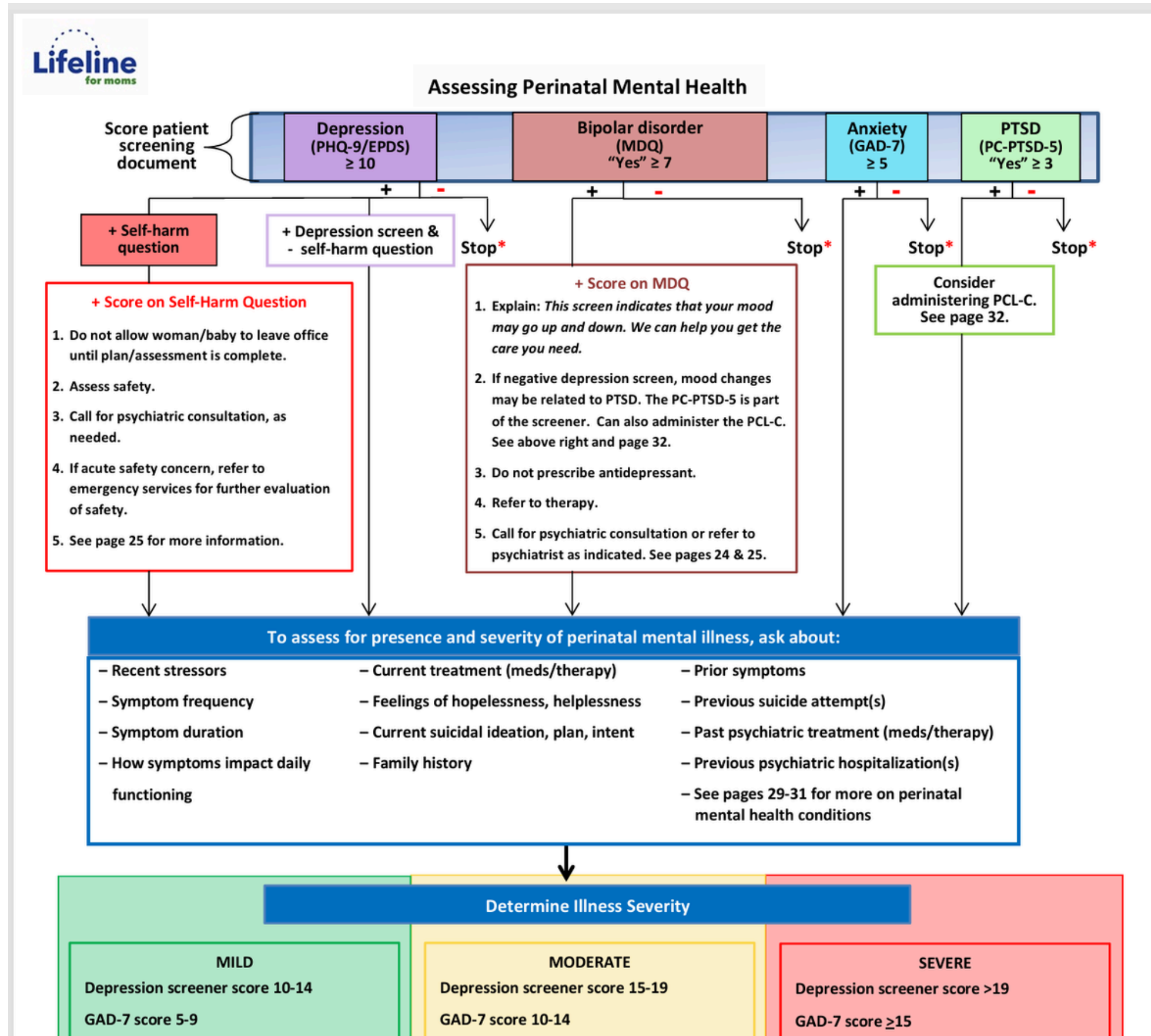
*To reduce data submission burden, play to teams' strengths, and provide more concrete goals for sustaining this bundle, the PMHC Workgroup recommends that teams focus on these **THREE** measures moving forward:*

1. PMHC Assessment and Response Protocol
2. Inpatient PMHC Screening, disaggregated by race/ethnicity, payor type, and language
3. Patient Education on PMHC, disaggregated by race/ethnicity, payor type, and language

Teams reaching Sustainability Criteria for all three measures will receive recognition with a certificate and are eligible to reduce data submission to quarterly (vs. monthly)!



Some Resources to Complete These Measures:



[Access L4M Toolkit \(pages 18-21\) Here!](#)

[Review PNQIN Webinar on Assessment & Illness Severity \(recorded 1/21/25\) here!](#)

[ACOG eModules: Addressing Perinatal Mental Health Conditions in Obstetric Settings](#)



Data Submission: Optional Measures for Individual Site Sustainability

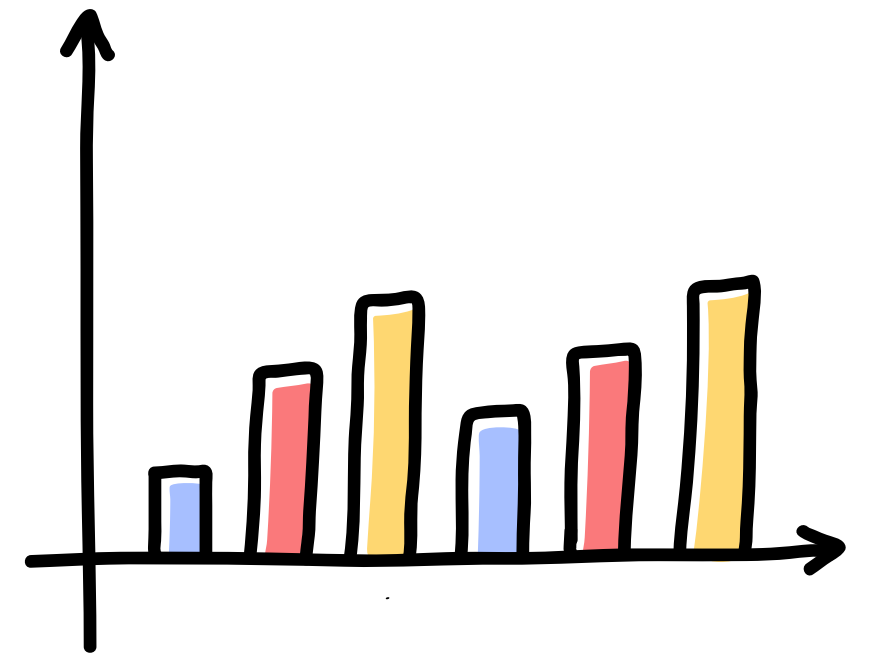
If you are working on any of the below bundle measures, in addition to the 3 Key Measures, your site will be reviewed for recognition of achieving Sustainability Criteria:

Likert scale score of 4 or 5 for the last 3 reported months (or more):

1. Inpatient-Outpatient Care Coordination Workgroup
2. Resource Mapping/ Identification of Community Resources
3. Patient Education Materials on Urgent Postpartum Warning Signs
4. Validated PMHC Screening Tools Shared with Prenatal Care Sites

Average across reported groups must be 70% or higher for the last 3 reported months (or more):

1. Provider and Nursing Education on Perinatal Mental Health Conditions
2. Provider and Nursing Education on Respectful Care
3. Prenatal Screening for Depression and Anxiety
4. Postpartum Screening for Depression and Anxiety
5. Percent of Pregnant and Postpartum People with PMHC Who Discussed, Received or Were Referred to Treatment



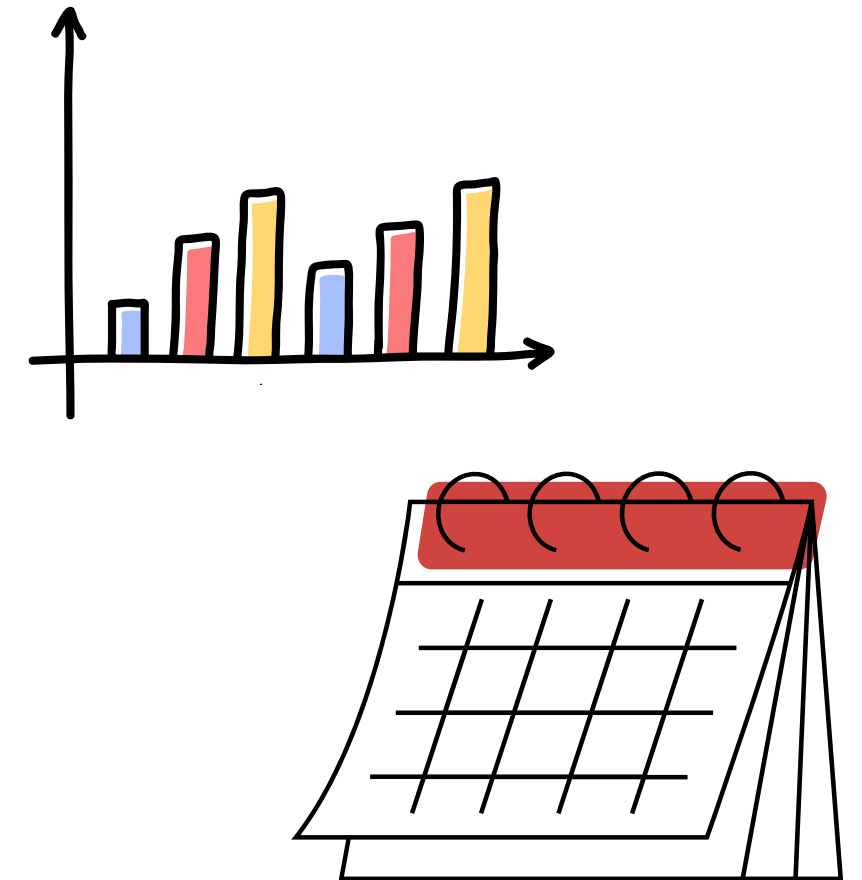
Data Submission: Updates to Frequency

Once your site has reached Sustainability Criteria for the 3 Key Measures:

- Congratulations!!!
- You are eligible to decrease your data submissions for the PMHC bundle from monthly to quarterly, for a minimum of 6 months (i.e., 2 quarterly submissions).
 - If data falls below sustainability criteria during the 6-month period, PNQIN will reach out individually to determine needs and support.
- After which, you no longer have to submit PMHC data to PNQIN, but we encourage you to monitor data internally.

If your site has not yet reached Sustainability Criteria for the 3 Key Measures:

- Monthly data submission of the key measures (at minimum, with other measures optional) will still be encouraged and monitored by PNQIN.



Sustainability: Webinar Attendance & Participation

PNQIN Monthly Webinar Series

3rd Tuesdays from 12-1pm ET:

1. October 21st, 2025
2. November 18th, 2025
3. December 16th, 2025
4. January 20th, 2026
5. **February 17th, 2026**
6. *No March webinar*
7. *No April webinar*
8. May 19th, 2026*
9. *No June webinar*
10. *No July webinar*
11. August 18th, 2026

**PNQIN Spring Summit also in May 2026*

Topics:

- Year 1 in Review, New Hampshire PQC
- Screening in Peds and NICU Settings
- Non-Pharmacological Treatment Options
- Introduce Sustainability Framework
- **Celebrate Achievements, Review Framework**
- Sustainability Check-In
- Sustainability Check-In



Webinar Attendance & Participation

- **Monthly bundle status updates (Goal: Submit at least 50% of the time)**
 - Brief, 3-question update form submitted by each participating team describing current work, challenges, and any questions for PNQIN/other teams.
 - Monthly submission by the 15th of the month via Microsoft Forms link (email reminders).
- **Quarterly live webinars (Goal: Attend 50% of the time)**
 - DATES: May 19th, 2026 and August 18th, 2026
 - At least one representative from each participating team to attend
 - Answers from teams' status update forms will provide webinar content
 - Highlight successes, invite teams to share more details or resources
 - Discuss challenges and PNQIN team to provide QI coaching



In Between Sustainability Webinars:

- The PNQIN team will review teams' monthly status updates and reach out individually to address concerns and offer QI coaching and resources.
- **We encourage everyone to attend the PNQIN Spring Summit on May 13th:**
 - Hear data from the MA Maternal Mortality Review Committee on mental health and substance use.
 - Learn about PNQIN's plans to support hospitals in responding to MMMRC data and recommendations.
 - Network with PMHC exhibitors and community organizations.
 - Visit the poster session, where we encourage teams to share your work on the PMHC bundle!
- **We will also consider hosting ad-hoc virtual sessions for:**
 - Teams using the same EMR to talk to each other about data collection.
 - A training on prescribing medications for PMHC and other topics of interest indicated on the feedback surveys.



Save the Date!

PNQIN Spring Summit

May 13, 2026
Full day (time TBD)

Please join us in-person for our annual meeting at the Four Points Sheraton in Norwood, MA!

We are excited to bring you another full day of quality improvement and perinatal care content! The agenda (breakout rooms, poster presentations) is to be determined, and we will present awards to some distinguished individuals and hospital teams for their work in promoting obstetric and neonatal health in the state of Massachusetts and beyond!

Registration and agenda coming early 2026!

Agenda has been finalized!
Registration page will be shared soon!



Sustainability: Creating and Updating a Plan of Action

Creating a Sustainability Plan

- The February 2026 Implementation Feedback Survey will be formatted as a fillable draft sustainability plan.
 - Questions will be based on sustainability best practices from QI leaders and organizations (e.g., Institute for Healthcare Improvement)
- PNQIN Team will encourage teams to regularly review, adjust, and share updates to your sustainability plan via the Monthly Status Update form and during Sustainability Webinars.
- When it's time for the August feedback survey, each site will receive a copy of their February draft plan and be asked to answer questions to assess progress and document adjustments made.



Sustainability: Dissemination & Sharing Opportunities

Dissemination & Sharing with Others

- PNQIN will continuously offer opportunities and support all sites (particularly those who have not yet done so) to share an experience or deliverable from their PMHC Bundle implementation.
- Thank you to the 14 sites who have shared so far!
- **Examples:**
 - Present/share out during a PNQIN webinar OR an external event (e.g., professional conferences)
 - Present a poster at the PNQIN Spring Summit in May
 - Send Kali a resource that can be distributed to other teams in the collaborative:
 - Unit workflow
 - Protocol document
 - Simulation materials
 - Patient education packet
 - Provider education curriculum
 - And more!



Sustainability: Recognition

Recognition of Your Team's Hard Work!

- Certificates will be made for each hospital on a rolling basis as participation requirements (through August 2026) and sustainability criteria are met.
- **We want to give as much recognition as possible!!**
 - If your team feels they have completed a requirement that we don't have documentation of through our own records, we are happy to review any other materials you may have (e.g.; if your site hasn't reported data on the Patient PMHC Education measure but can provide evidence that you do distribute education to all patients equitably).
- In February, Kali will send each team a simple report outlining where you currently stand on completed requirements and sustainability criteria.



Recognition Categories

1. Participation in the PMHC Bundle Collaborative:

- **Outstanding Participation Award** for meeting all requirements during active implementation and sustainability:
 - Onboarding
 - Data submission
 - Webinar attendance
 - Implementation feedback surveys
 - Sustainability plan
 - Sharing opportunities
- **Participation Award** for meeting individual requirements:
 - Each requirement met will be listed on each site's certificate.



Recognition Categories

2. Sustainability of the PMHC Bundle:

- **Sustainability Achievement Award** will also be given for all teams meeting sustainability criteria for the 3 key measures:
 - PMHC Assessment & Response Protocol
 - Inpatient Screening
 - Patient PMHC Education
- Additional recognition will be given for meeting sustainability criteria for optional measures:
 - Measures met will be listed on each site's certificate.



Questions, Concerns, Feedback?



Kali Vitek Espinola, MPH
PNQIN Senior Project Manager

Agenda

12:00–12:10 Welcome &
PNQIN Announcements

12:10–12:25 Celebration
of PMHC Bundle
Achievements!

12:25–12:45 Review of
Sustainability
Framework

12:45–1:00 Discussion,
Q&A



Thanks for joining, see you on 5/19!

Have questions?

Email PNQINAdmin@pnqinma.org!

